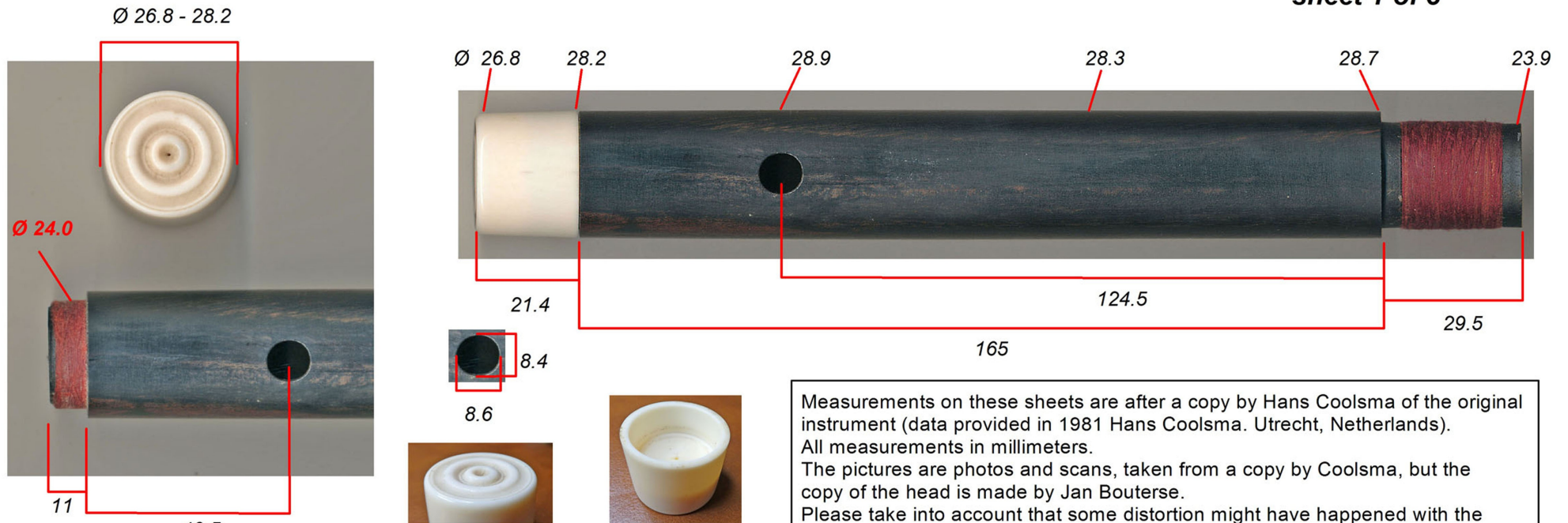


Stanesby Junior traverso (ex-Brüggen collection) - drawings and pictures by Jan Bouterse, Alphen aan den Rijn, Netherlands

sheet 1 of 3



Measurements on these sheets are after a copy by Hans Coolsma of the original instrument (data provided in 1981 Hans Coolsma. Utrecht, Netherlands). All measurements in millimeters. The pictures are photos and scans, taken from a copy by Coolsma, but the copy of the head is made by Jan Bouterse. Please take into account that some distortion might have happened with the scans (instrument parts looking thinner or just thicker than they in reality are). No guarantee can be given for the correctness or completeness of the data in these drawings and of the colours in the pictures.

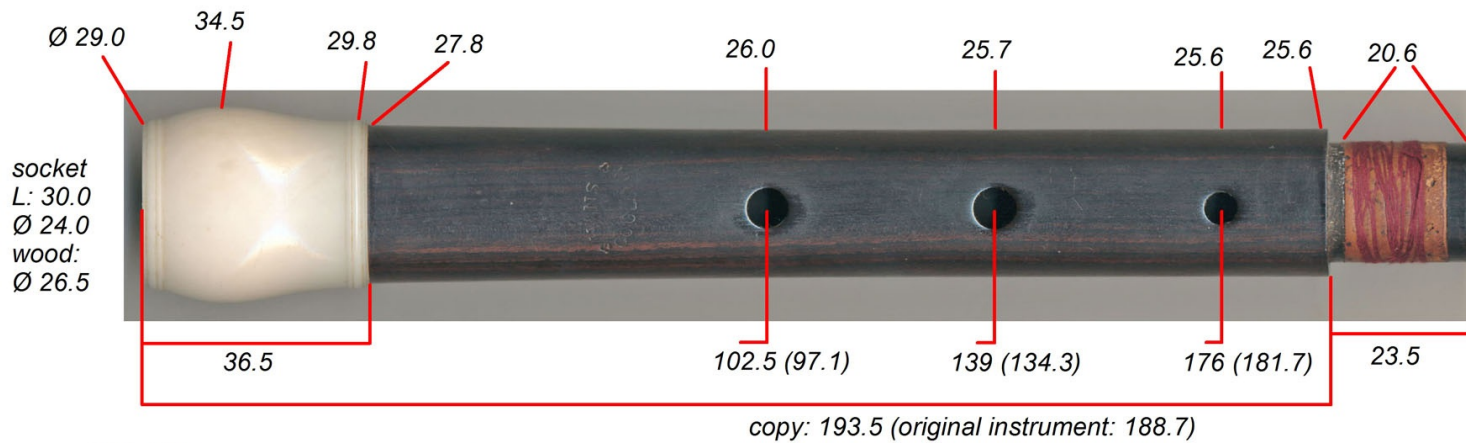
*Bore of the head of the copy: Ø 19.3 from cork end to L 130, and Ø 19.2 from L 130 to lower end; cork at about 18 mm from mouth hole centre.*

*Original bore c. 19.5, cylindrical.*

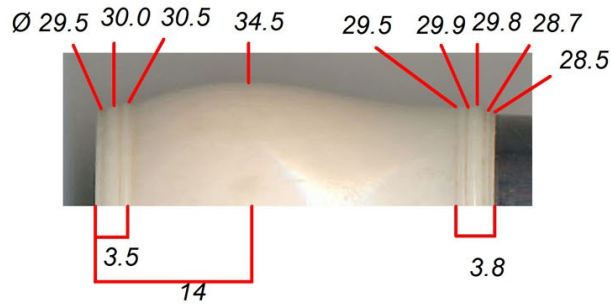
*The original instrument and the copy by Hans Coolsma are made from African Blackwood with an ivory cap and rings, and a silver key.*

*Coolsma made the mouth hole on his copies about 0.5 mm bigger (up to 9.0) mm than the original. Length of the undercutting of the mouth hole: about 12 mm.*

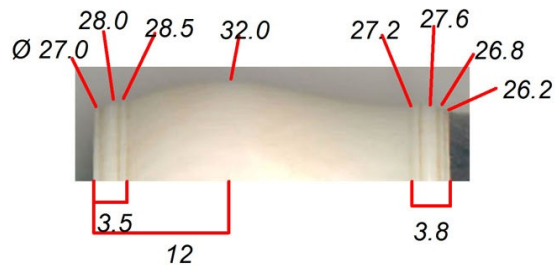
*The head by Jan Bouterse is made from ebony wood; the mouth hole has about the original dimensions.*



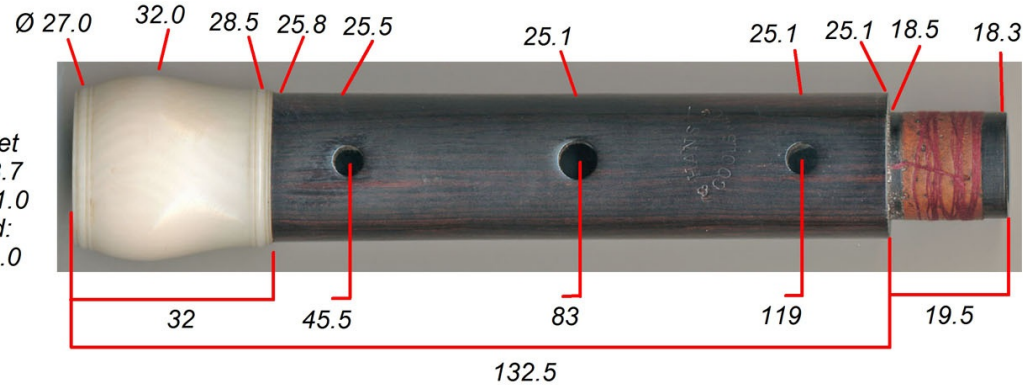
bore measurements  
(by Coolsma, of original instrument)  
L from socket end, Ø upper middle joint  
0-1967; 10-18.57; 20-18.21  
30-18.0; 40-17.78; 50-17.7  
60-17.7; 70-17.34; 80-17.0  
90-16.95; 100-16.75; 110-16.45  
120-16.4; 130-16.33; 140-16.15  
150-15.9; 160-15.63; 170-15.42  
180-15.5; 182-15.52  
lower middle joint:  
0-15.3; 3-15.3; 10-15.37  
18-15.3; 35-15.1; 38-15.0, then  
straight to 83-13.9; 90-138  
98-13.76; 108-13.77; 113-13.72  
118- 13.7; 129-13.67



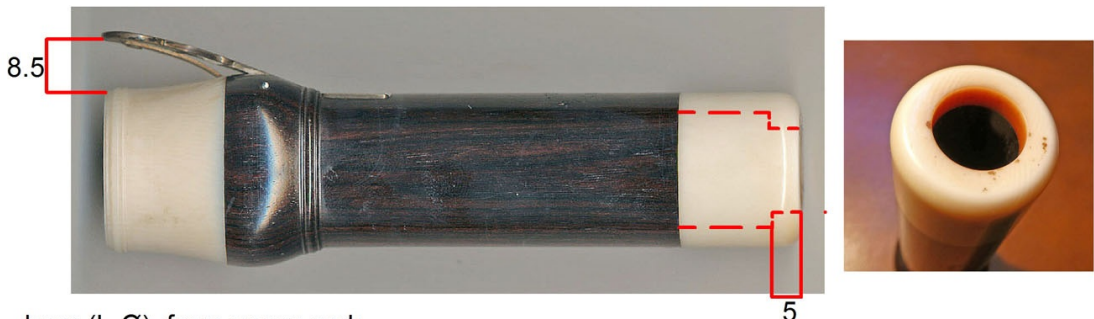
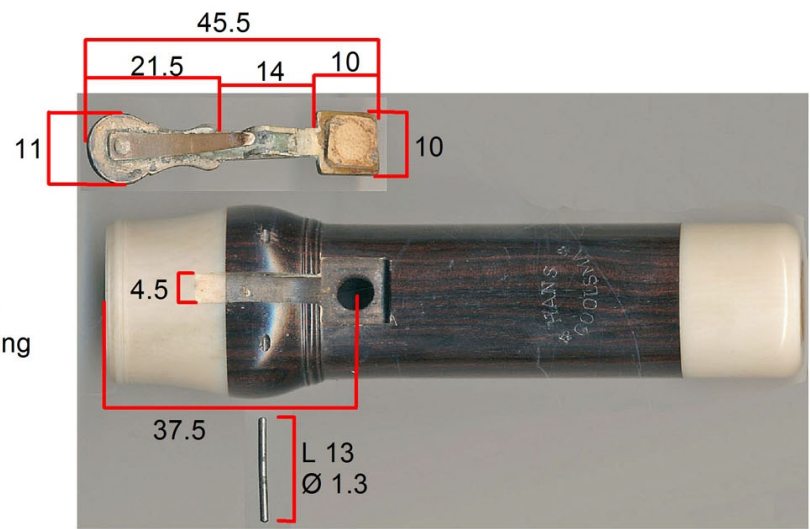
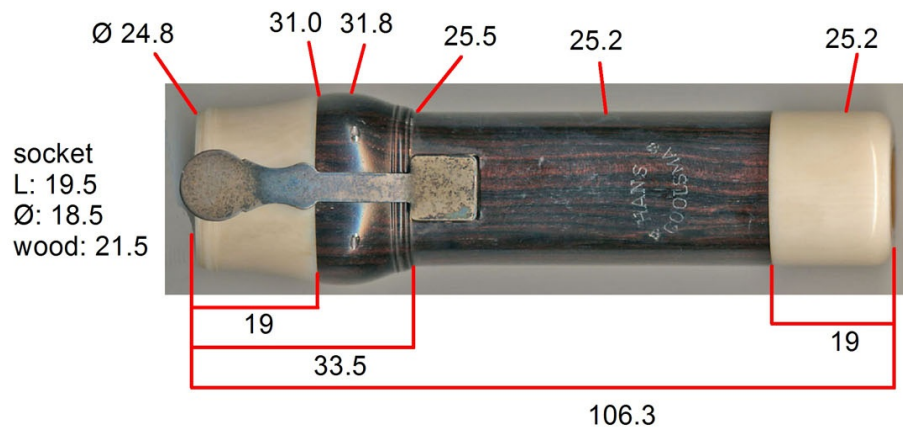
| size           | undercut (L) | size                              | undercut (L) |
|----------------|--------------|-----------------------------------|--------------|
| hole 1 6.7x6.7 | 10           | hole 4 5.0x5.0                    | 6            |
| hole 2 6.9x6.9 | 10           | (on original instrument: 5.9x5.9) |              |
| hole 3 5.2x5.2 | 6            | hole 5 6.2x6.2                    | 8.5          |
|                |              | hole 6 5.0x5.0                    | 5.5          |



socket  
L: 23.7  
Ø: 21.0  
wood:  
Ø 24.0

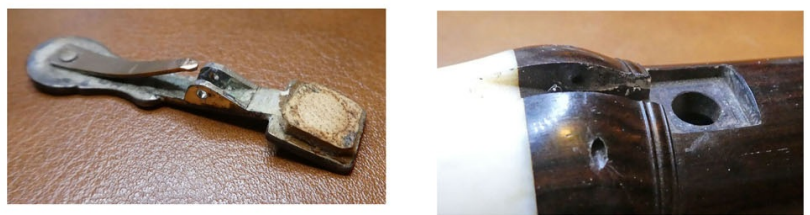


sheet 2 of 3



bore (L-Ø), from upper end:  
 18-13.67; 24-3.6; 38-13.4; 48-13.1; 70-13.2; 81-13.5; 89-13.6; 100-13.6; 106-13.7

pitch: about  $a_1=415$  Hz (according to Hans Coolsma: 415 to 419 Hz)



**sheet 3 of 3**

Stanesby Junior traverso (ex-Brüggen collection)  
 drawings and pictures by Jan Bouterse, Alphen aan den Rijn, Netherlands